

BVH: **Eutherm Profiles**

Processor: **Grad Export**

Program version: **SchüCal 2025 R3**

System: **Schüco ADS 75**

Editor: Clemens Schwarzingner

Tel: +43 1 98130-236

Version: V07

Due date: 06.11.2024 | 21.11.2024 | 08.04.2025 | 04.03.2026
14.04.2026 | 06.05.2026

Item overview

Special item	Half-shell internal	Half-shell external	SchüCal item	Designation / Use
9656740	398010	9656738	9656740	Outer Frame SL
9656745	398030	9656744	9656745	Outer Frame SL
9656747	398040	9656746	9656747	Mullion SL
9656749	398010	9656748	9656749	Outer Frame FL
9656751	398030	9656750	9656751	Outer Frame FL
9656753	398040	9656752	9656753	Mullion FL
9656755	398010	9656754	9656755	Outer Frame RL
9656757	398030	9656756	9656757	Outer Frame RL
9656759	398040	9656758	9656759	Mullion RL

Additional Profiles as of 04.03.2026

Special item	Half-shell internal	Half-shell external	SchüCal item	Designation / Use
9039807	345280	345280	9039807	Extension Profile 26mm
9039808	345110	345110	9039808	Extension Profile 34mm
9039809	345120	345120	9039809	Extension Profile 44mm
9039810	345130	345130	9039810	Extension Profile 54mm
9039811	345300	345300	9039811	Extension Profile 100mm

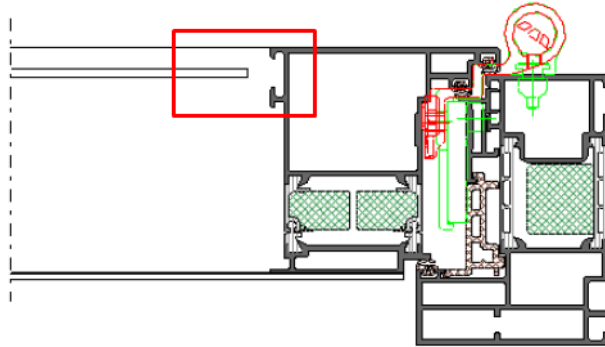
Remarks:

- The data supplied has been prepared and checked for use in work preparation (production lists and saw control). For the control of profile machining centres, please follow the notes from page 2.
- Item information, such as price, VE, must be clarified before ordering with our purchasing and, if necessary, adjusted in the item management.

For input support, reference elements with corresponding technical settings have been created (see SchüCal data backup). These must be changed and checked prior to use on the respective installation situation. The input is basically similar to standard profile systems. However, the following notes should be observed:

Notes V01

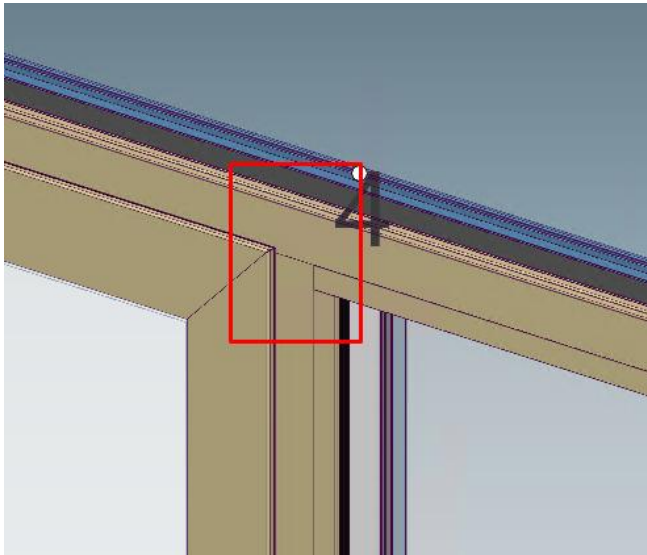
- **Machinecontrol MCo:**
For machinecontrol MCo the MCO filter is necessary.
- **Panel for door leaf:**
the glazing bead and gasket have to be deleted manually



Notes V02: 21.11.2024

Update Profile-Connection 9656757 + 9656759:

Correction of connection between frame 9656757 and mullion 9656759, including adjustment of the notching



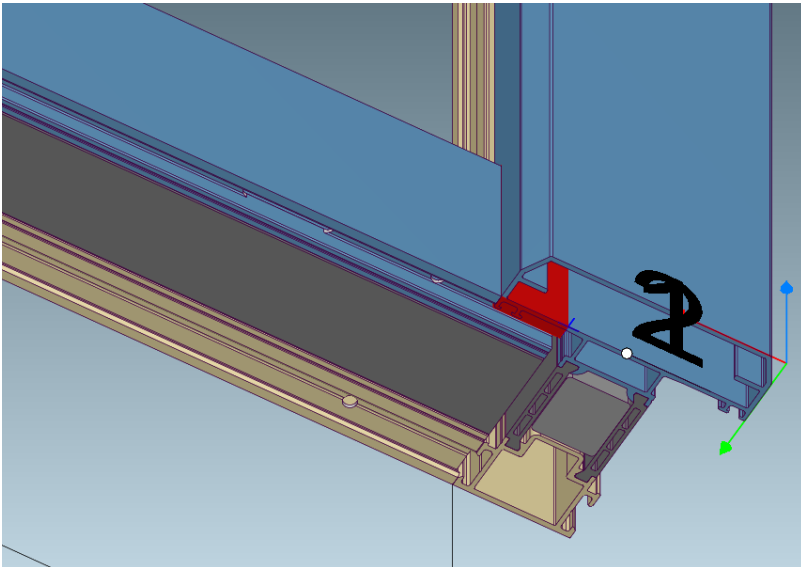
The data has been adapted to the reference modules in the above-mentioned version, and any deviation (e.g. glass thicknesses or profiles) must be checked by the user.

We have carried out the input carefully, but we do not guarantee the accuracy and completeness of the results. In order to ensure faultless serial production, the manufacturing of a sample module by the processor is absolutely necessary, as well as a detailed data check. We will be happy to answer any questions you may have.

Notes V04: 08.04.2025

Update Connection standard profile + special profile:

The notch of the standard profile is now on the correct position



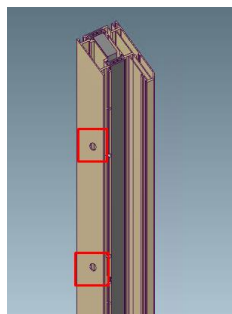
Notes V06: 14.04.2026

Correction of insertion points for door leaf profiles

Notes V07: 06.05.2026

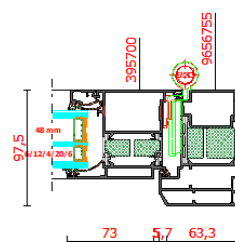
Profile 9656757

Processings for barrel hinges are now available



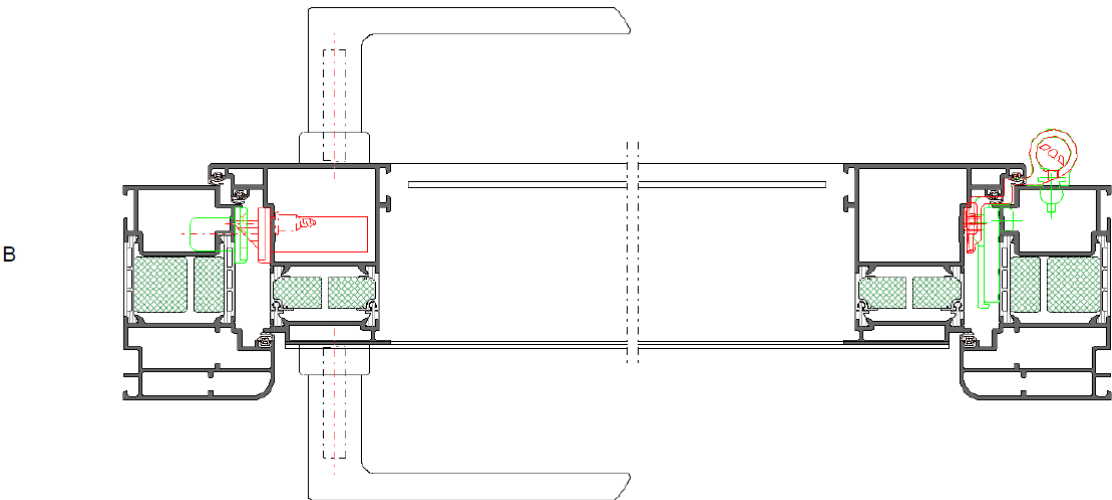
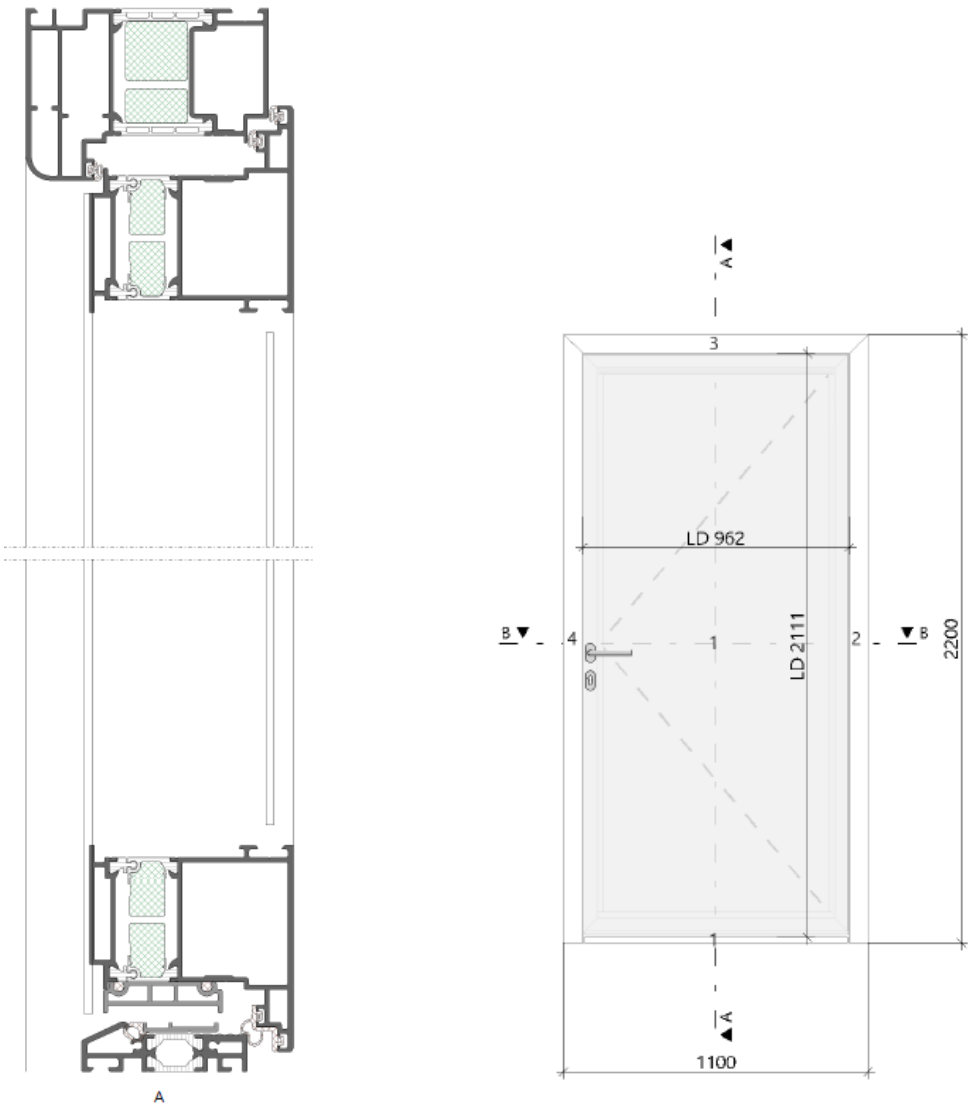
Profiles 9656755, 9656749

Correction of insertion points for door leaf profiles



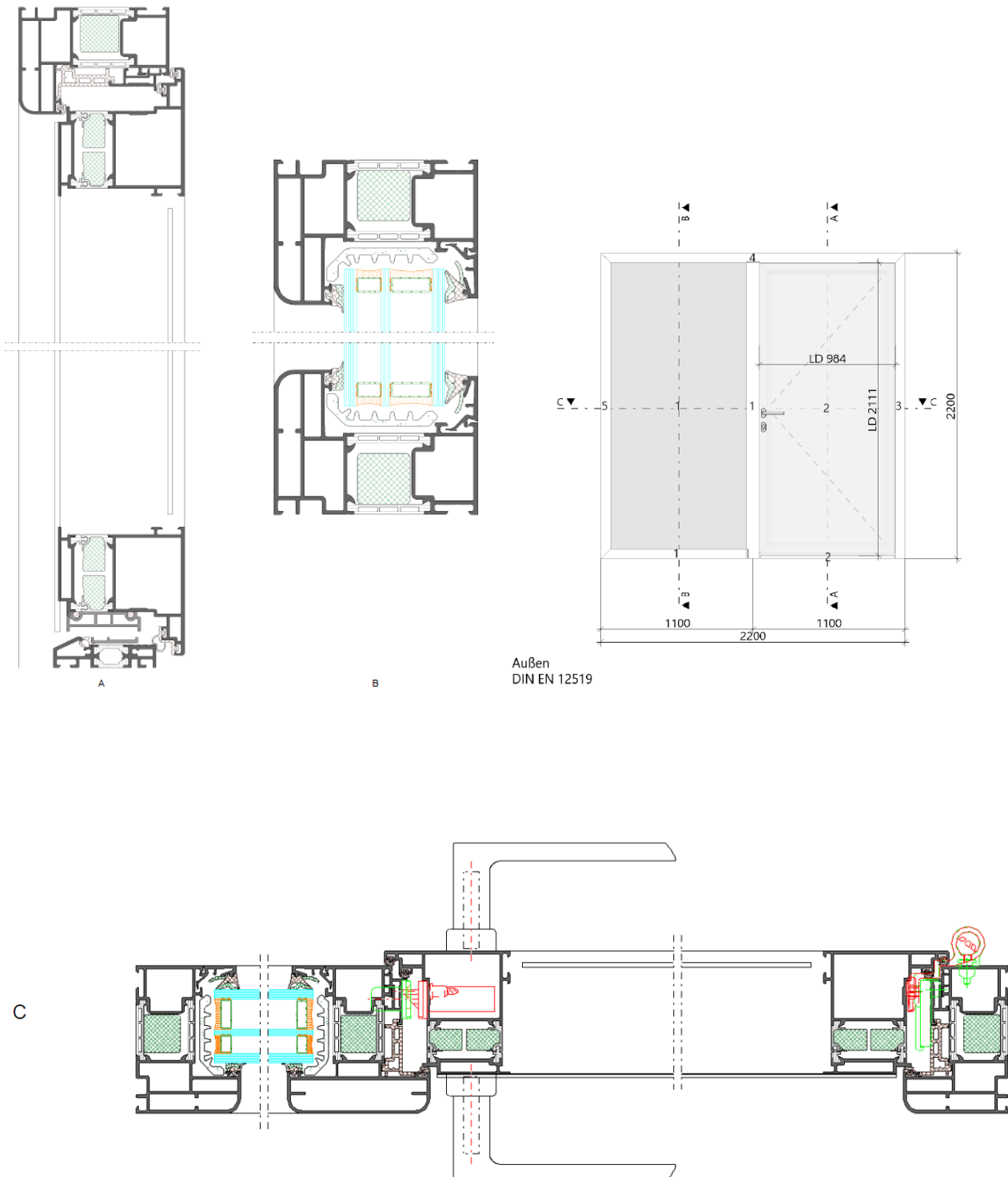
Reference modules

Project: Eutherm Profiles | SOFT



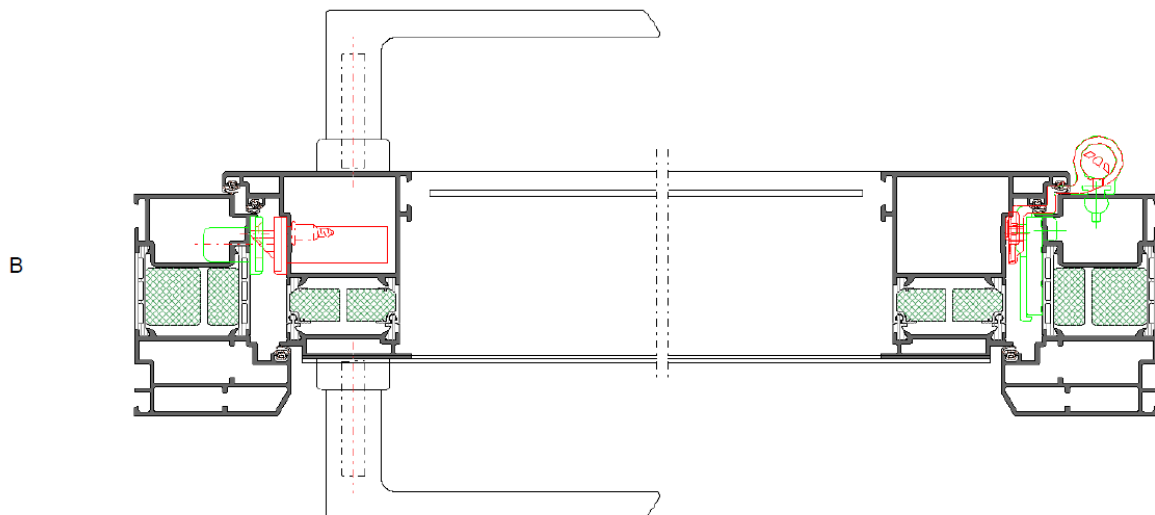
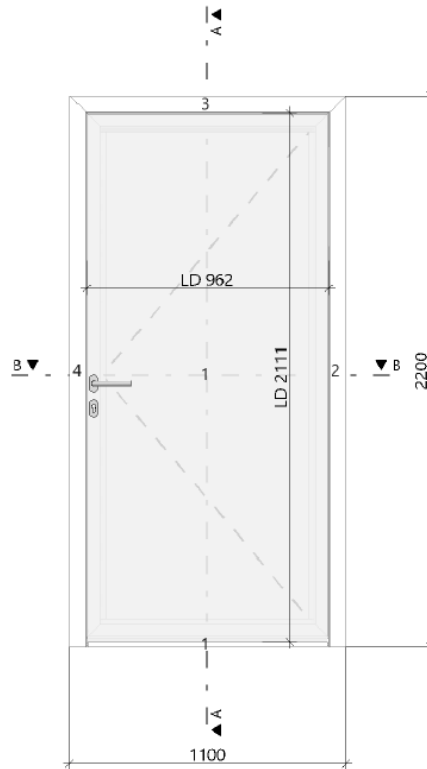
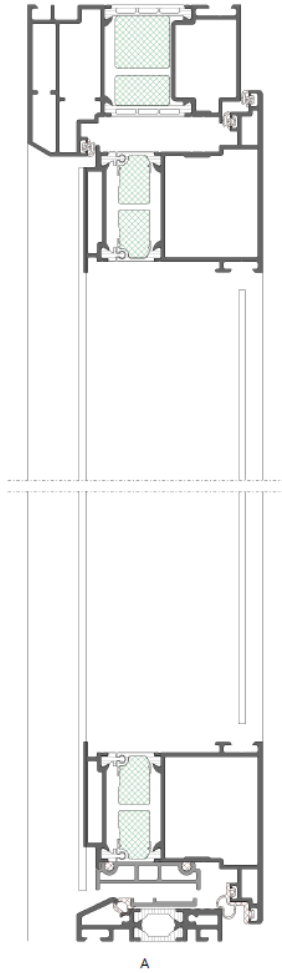
Reference modules

Project: Eutherm Profiles | SOFT



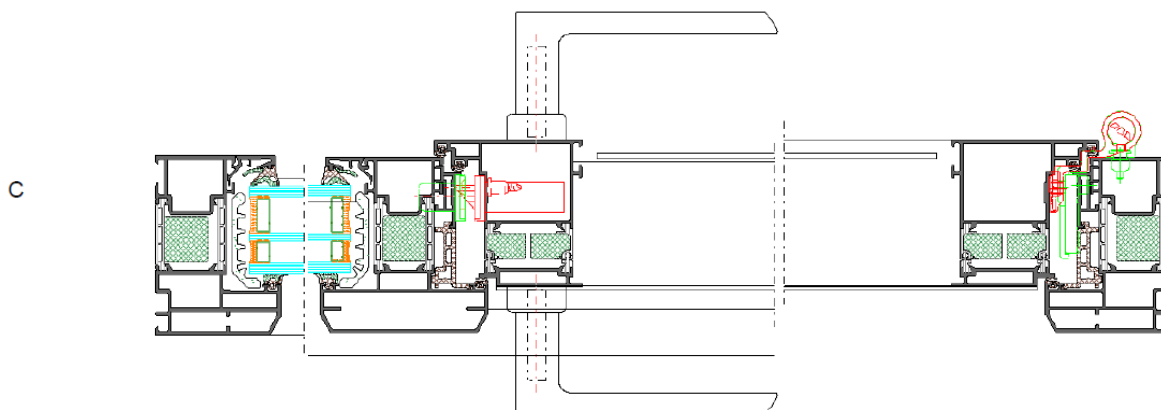
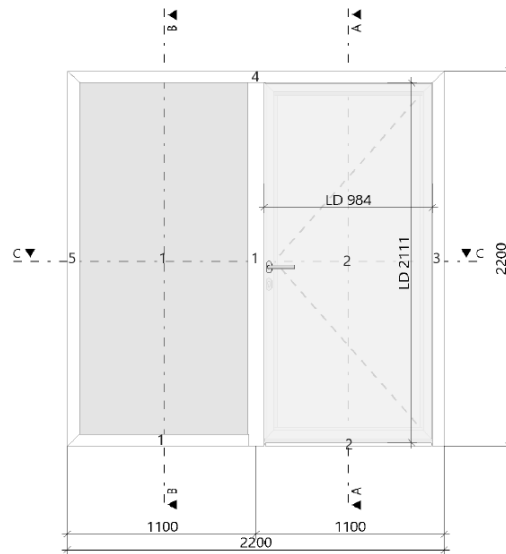
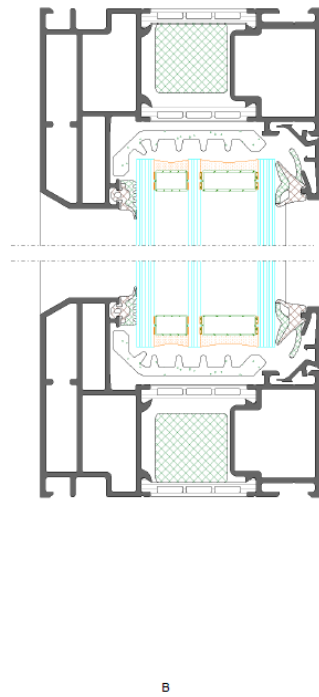
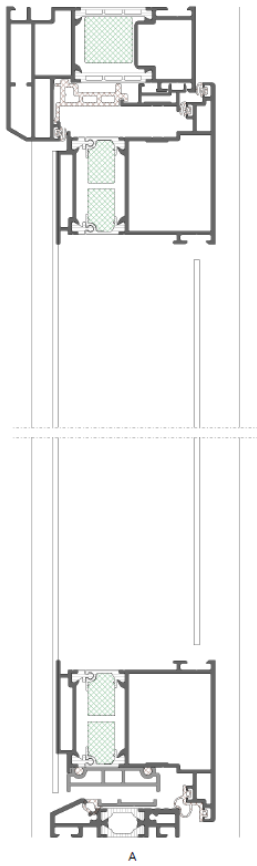
Reference modules

Project: Eutherm Profiles | RESIDENTIAL



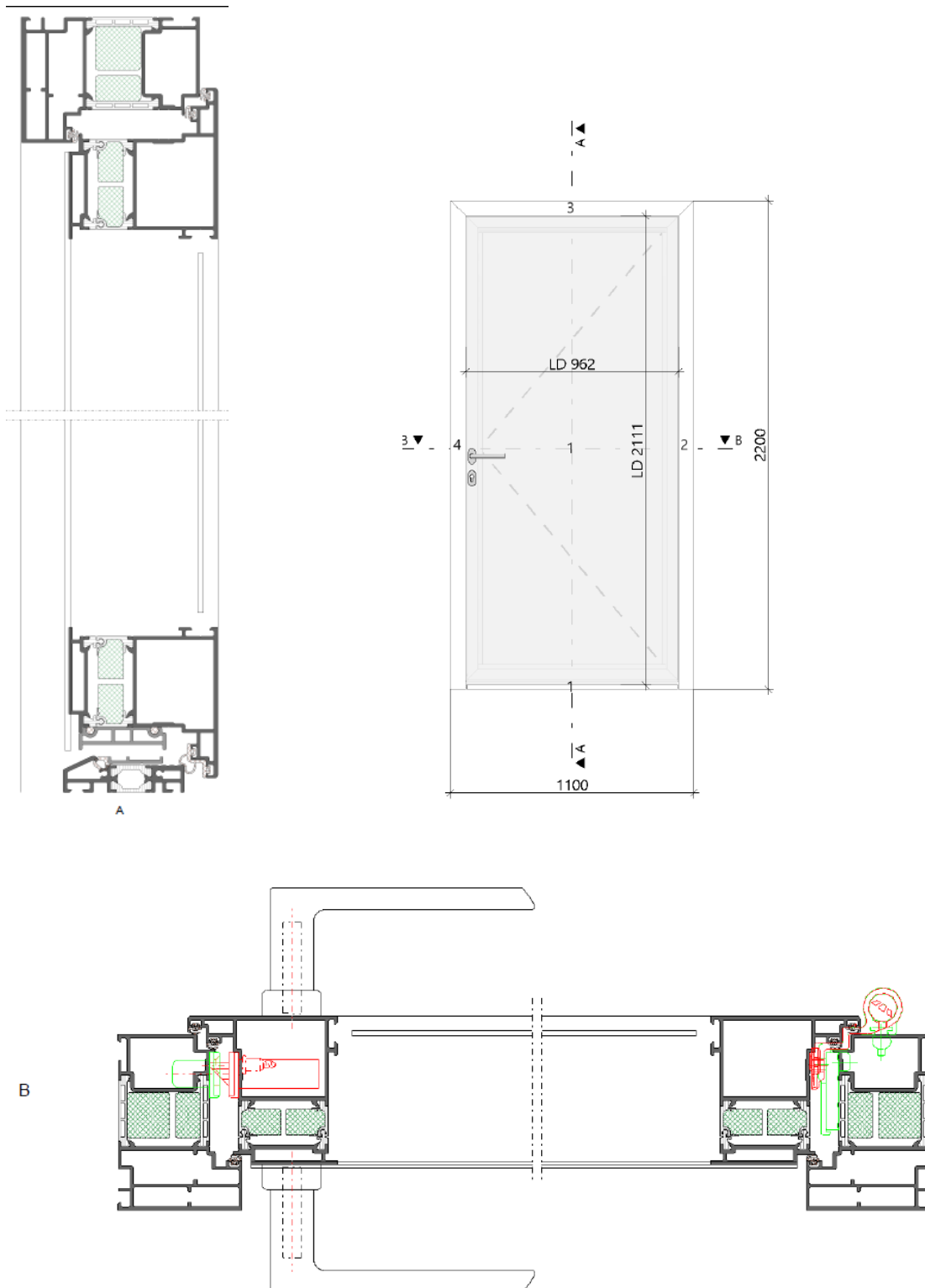
Reference modules

Project: Eutherm Profiles | RESIDENTIAL



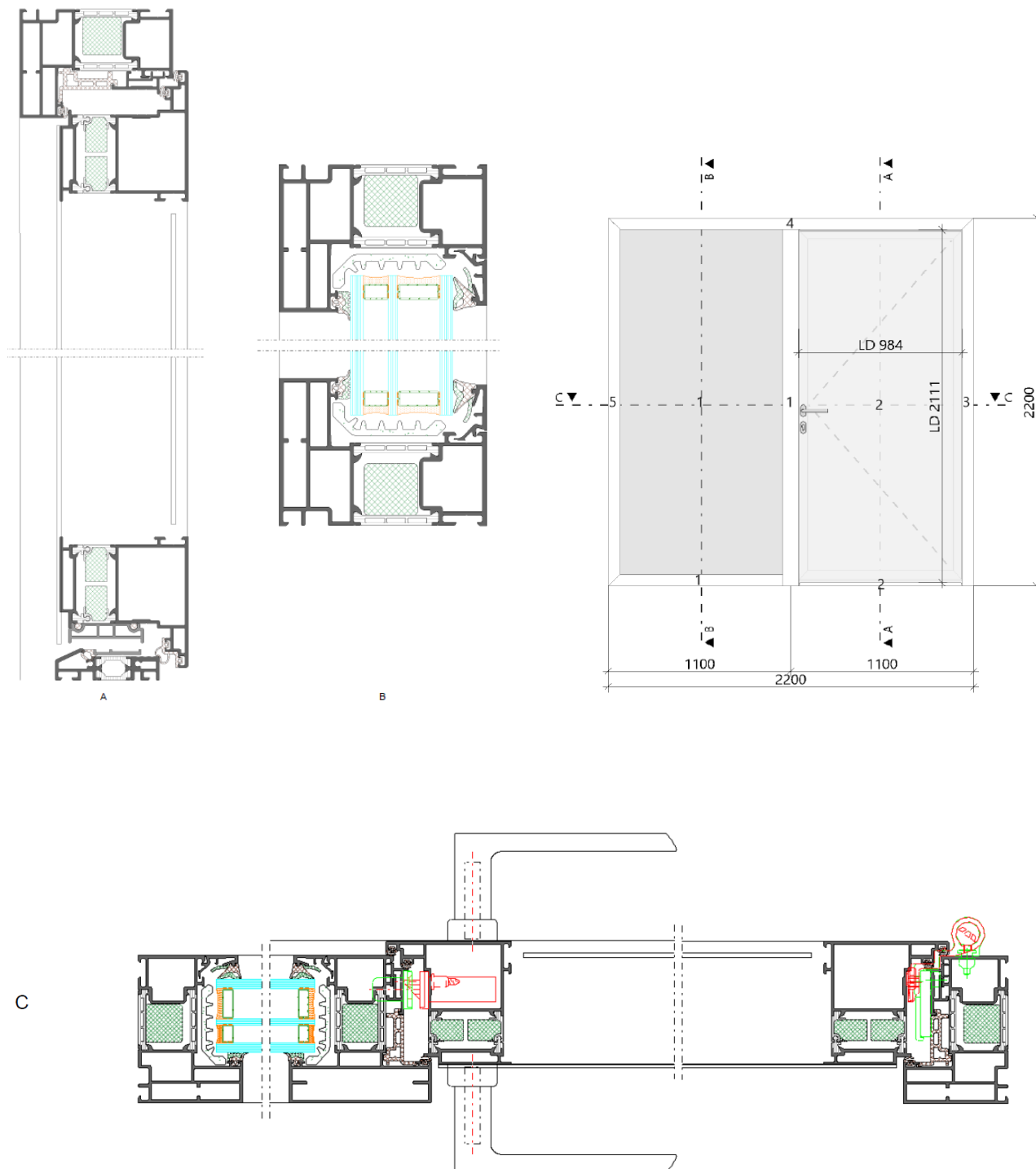
Reference modules

Project: Eutherm Profiles | EDGE



Reference modules

Project: Eutherm Profiles | EDGE



Conditions for implementing special items

INTEGRATION of SPECIAL ITEMS (profiles / accessories / fittings) into WORK PREPARATION in SchüCal

Software service for special items (SchüCal implementation)

1. Scope of services for the integration of SchüCal work preparation (excl. CAM)

1.1 Integration profile:

In the quoted lump sum per profile according to the enclosed offer, the costs for programming the special profile and its use in up to 2 different types of module in a construction project in SchüCal are included. A type of module is defined, for example, by different glass thicknesses, profile combinations and/or different types of opening (*types of opening = outward or inward opening, single or multi-leaf*).

1.2 Integration fittings / accessories:

In the quoted lump sum per item, according to the enclosed offer, are the costs for the programming of special fittings, special accessories or customised fittings for the input of this item in SchüCal article groups.

The integration of customer-specific door fitting items into the SchüCal door fitting manager requires a separate check and will be calculated after commissioning according to effort, at an hourly rate of 118.00 Euros. The data is valid for the current version of the program at the time of implementation. After a program upgrade, a new import into SchüCal with the supplied import files is required (see documentation on the item). Any necessary adjustment after a SchüCal program upgrade will be calculated after commissioning according to effort, at an hourly rate of 118.00 Euros.

The user thus has the possibility to generate output lists, like for the SchüCal standard systems, also for special constructions (*subject to a feasibility study and restrictions according to the offer*). These are:

- | | |
|-----------------------|--------------------|
| • Mass composition | • Cut optimisation |
| • Order quantity list | • Cut composition |
| • Glass arrangement | • Module overview |
| • Parts list | • Glass plans |
| • Calculation | • Infill plan |
| • Item drawing | |

Additional types of module are calculated according to effort, at an hourly rate of 118.00 Euros.

The geometry data required for processing on the machine (SchüCam) are provided in SchüCal and can be exported by the user and installed on the machine.

2. Scope of services machine control

2.1 SchüCal machine control of special profiles:

In addition, it is possible to implement special profiles for SchüCal machine control (MCo). This service is not included in this offer. If such an implementation is desired, we can offer it separately. The relevant programming will be charged after previous examination and a resulting offer calculated according to effort, at an hourly rate of 118.00 Euros. In the case of a commissioning, the programming for SchüCal MCo is executed according to the Schüco processing drawings. The mechanical machining operations are automatically generated in SchüCal or, if necessary, these are adjusted with SchüCal MCo-Filter and supplemented with processing lists. The data for the machine control have to be checked using a sample element before production. The data will be adjusted if necessary.

2.2 SchüCal machine control of customer-specific fittings (third-party fittings):

Furthermore, it is possible to implement customer-specific fittings for the machine control. This service is described in a separate offer.

2.3 Processing on the machine (SchüCam):

The Technical Customer Service can provide assistance for the processing on the machine, according to the "General Terms and Conditions of the Technical Customer Service" (see www.alukoenigstahl.com).

3. Conditions for implementation

For the integration of special designs, the "General Terms and Conditions of the AluKönigStahl GmbH Software Service for SCHÜCO" apply, as well as the conditions present here for the integration of special articles. In cases of contradictions, the latter precede the former. The tenders, order, feasibility tests, and integration of special products are made exclusively on the basis of the Terms and Conditions and the conditions for the integration of special articles, deviating conditions of the client are expressly not recognised. Regulations deviating in individual cases shall only apply if they have been agreed in writing.

When implementing special articles (special profiles / accessories / fittings), only system parts supplied by AKS are considered.

Accessory parts, such as fastening materials, insulation materials, etc. from third-party suppliers are not included, with the exception of customer-specific hardware items, which requires a separate offer (see below).

When implementing customer-specific hardware articles, the hardware components are recorded according to the specifications of the client (detailed installation drawings and details of the required mechanical processing).

Please note that due to programming reasons, special designs sometimes show up with differences compared to standard system input. These differences are to be taken into account above all with vulcanised sealing frames (cannot be determined), glazing (*glass blocks, glass overlay, glass strip holders may have to be manually deleted from the production lists*), hardware determinations (*special fittings are calculated via hardware groups*) or sliding constructions (*currently via Microsoft® Excel with subsequent import into SchüCal*). Further restrictions depend on the respective construction and can only be defined in detail after a corresponding feasibility check, which is carried out after awarding by the client.

- 3.1 In any case, a feasibility check must be carried out prior to final awarding for the integration of the special articles. This feasibility check will only be carried out in the course of awarding by the client under the provision of all necessary detailed drawings approved by the client (*production and implementation plans*). After successful completion of the feasibility check, AKS will inform the client whether the desired integration can be realised.
- 3.2 The created special articles are only applicable for the application cases defined by the client in the detailed plans.
- 3.3 The special profiles can only be used for the AVOR (work preparation), that is for the creation of BOMs and material extracts. Data for machine control are not included in the enclosed offer per profile. A CAM data processing can be offered separately if required.
The services offered can only be used in conjunction with the SchüCal software solutions provided by AKS.
- 3.4 The data / results sent to the client have been carefully checked, but ALUKÖNIGSTAHL assumes no liability for the accuracy - our general terms and conditions of sale and delivery apply in this regard.
- 3.5 Any changes subsequently requested or caused by the client will be charged after separate written order according to effort, at an hourly rate of 118.00 Euros.

SchüCal Data – V07

We have carried out the input carefully, but we do not guarantee the accuracy and completeness of the results. In order to ensure faultless serial production, the manufacturing of a sample module by the processor is absolutely necessary, as well as a detailed data check.

Notes on import:

1. Download and run the file using the link below
2. Close SchüCal
3. Run "V8_EuthermProfiles_SchueCalProfildata_V07.exe"
4. For Machinecontrol MCO import the MCO filter (only at the first time necessary)
5. Start SchüCal

By downloading the data, I take note of the above notes / conditions: [Link](#)